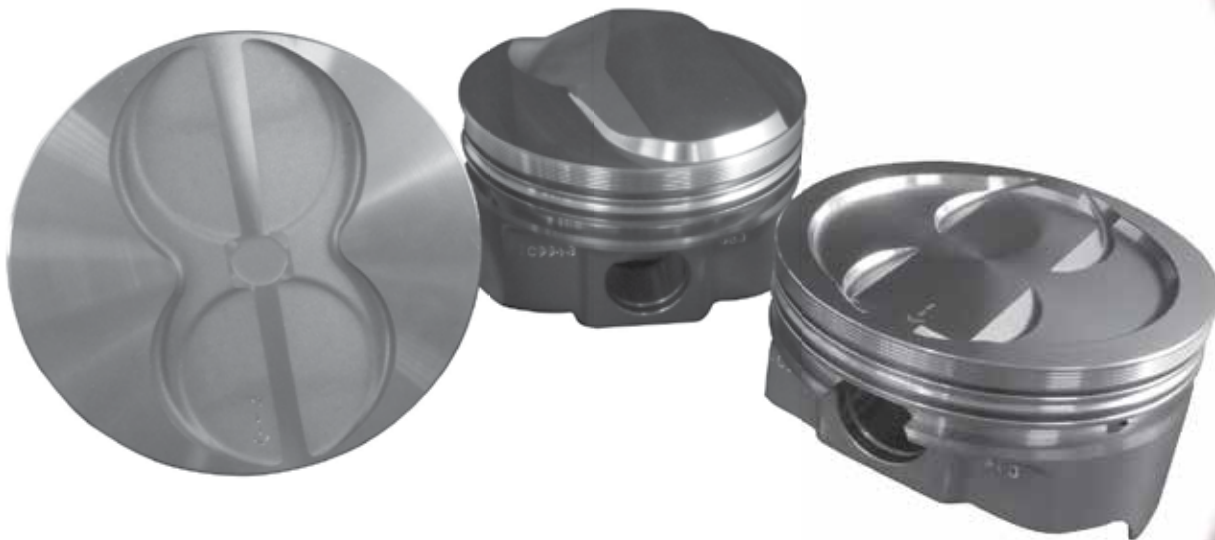




# ***FHR SERIES***

***FORMED HEAD RELIEF***



## **Forged 4032 Alloy**

Street  
Boost  
Nitrous  
Race  
Marine  
Towing



1mm = .03937" .001" = .0254mm

Fractions	Decimals	Millimeters	Fractions	Decimals	Millimeters	MM	INCHES	MM	INCHES
1/64"	.015625"	0.397	33/64"	.515625"	13.097	.1	.0039"	47	1.8504"
1/32"	.03125"	0.794	17/32"	.53125"	13.494	.2	.0079"	48	1.8898"
3/64"	.046875"	1.191	35/64"	.546875"	13.891	.3	.0118"	49	1.9291"
1/16"	.0625"	1.588	9/16"	.5625"	14.288	.4	.0157"	50	1.9685"
5/64"	.078125"	1.984	37/64"	.578125"	14.684	.5	.0197"	51	2.0079"
3/32"	.09375"	2.381	19/32"	.59375"	15.081	.6	.0236"	52	2.0472"
7/64"	.109375"	2.778	39/64"	.609375"	15.478	.7	.0276"	53	2.0866"
1/8"	.1250"	3.175	5/8"	.6250"	15.875	.8	.0315"	54	2.1260"
9/64"	.140625"	3.572	41/64"	.640625"	16.272	.9	.0354"	55	2.1654"
5/32"	.15625"	3.969	21/32"	.65625"	16.669	1	.0394"	56	2.2047"
11/64"	.171875"	4.366	43/64"	.671875"	17.066	2	.0787"	57	2.2441"
3/16"	.1875"	4.763	11/16"	.6875"	17.463	3	.1181"	58	2.2835"
13/64"	.203125"	5.159	45/64"	.703125"	17.859	4	.1575"	59	2.3228"
7/32"	.21875"	5.556	23/32"	.71875"	18.256	5	.1969"	60	2.3622"
15/64"	.234375"	5.953	47/64"	.734375"	18.653	6	.2362"	61	2.4016"
1/4"	.2500"	6.350	3/4"	.7500"	19.050	7	.2756"	62	2.4409"
17/64"	.265625"	6.747	49/64"	.765625"	19.447	8	.3150"	63	2.4803"
9/32"	.28125"	7.144	25/32"	.78125"	19.844	9	.3543"	64	2.5197"
19/64"	.296875"	7.541	51/64"	.796875"	20.241	10	.3937"	65	2.5591"
5/16"	.3125"	7.938	13/16"	.8125"	20.638	11	.4331"	66	2.5984"
21/64"	.328125"	8.334	53/64"	.828125"	21.034	12	.4724"	67	2.6378"
11/32"	.34375"	8.731	27/32"	.84375"	21.431	13	.5118"	68	2.6772"
23/64"	.359375"	9.128	55/64"	.859375"	21.828	14	.5512"	69	2.7165"
3/8"	.3750"	9.525	7/8"	.8750"	22.225	15	.5906"	70	2.7559"
25/64"	.390625"	9.922	57/64"	.890625"	22.622	16	.6299"	71	2.7953"
13/32"	.40625"	10.319	29/32"	.90625"	23.019	17	.6693"	72	2.8346"
27/64"	.421875"	10.716	59/64"	.921875"	23.416	18	.7087"	73	2.8740"
7/16"	.4375"	11.113	15/16"	.9375"	23.813	19	.7480"	74	2.9134"
29/64"	.453125"	11.509	61/64"	.953125"	24.209	20	.7874"	75	2.9528"
15/32"	.46875"	11.906	31/32"	.96875"	24.606	21	.8268"	76	2.9921"
31/64"	.484375"	12.303	63/64"	.984375"	25.003	22	.8661"	77	3.0315"
1/2"	.5000"	12.700	1"	1.000"	25.400	23	.9055"	78	3.0709"
						24	.9449"	79	3.1102"
						25	.9843"	80	3.1496"
						26	1.0236"	81	3.1890"
						27	1.0630"	82	3.2283"
						28	1.1024"	83	3.2677"
						29	1.1417"	84	3.3071"
						30	1.1811"	85	3.3465"
						31	1.2205"	86	3.3858"
						32	1.2598"	87	3.4252"
						33	1.2992"	88	3.4646"
						34	1.3386"	89	3.5039"
						35	1.3780"	90	3.5433"
						36	1.4173"	91	3.5827"
						37	1.4567"	92	3.6220"
						38	1.4961"	93	3.6614"
						39	1.5354"	94	3.7008"
						40	1.5748"	95	3.7402"
						41	1.6142"	96	3.7795"
						42	1.6535"	97	3.8189"
						43	1.6929"	98	3.8583"
						44	1.7323"	99	3.8976"
						45	1.7717"	100	3.9370"
						46	1.8110"		

## TABLE OF CONTENTS

---

FHR Information.....	62
General Motors LS FHR.....	63
Chevrolet SBC FHR.....	65
Chevrolet BBC FHR.....	69
Chrysler SB FHR.....	73
Chrysler BB FHR.....	74
Ford SB Windsor FHR.....	74
Pontiac FHR.....	76



# FHR FORGED

## FORMED HEAD RELIEF - 4032 Alloy

FHR series "Off the Shelf" pistons loaded with premium features found in custom made pistons.

**FHR – Formed Head Relief** pistons have valve reliefs that are formed in as the piston blank is pressed into the die. Many of the domed models are solid which allows tailoring the dome height for a specific compression ratio. Check the dome type box for specific dome description.

**4032 Alloy** material has 11% silicon content which controls the thermal expansion so a tighter piston to wall clearance may be used over the 2618 alloy. The additional silicon will also increase wearability on the skirts and pin bores making this an ideal material for street and light boosted applications.

- Press or bushed connecting rods may be used as all applications come with lock rings.

Die formed valve reliefs

**Mini grooves** allow an overheated piston that contacts a cylinder wall to transfer heat to the wall. Friction is also reduced over a solid land.

**Skirts** machined by UEM's unique in house built CNC machines.

**Accumulator groove** provides a reservoir area for gases that pass by the top ring. Pressure is reduced between top and second ring to help stabilize flutter and maximize ring seal.

**TECH LINE 800-648-7970 or  
email at tech@uempistons.com**

Final piston clearance should be based solely on the demands of the application. Clearance has been built into the piston, measure piston prior to final hone.



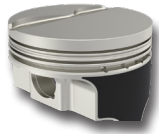
4032 ALLOY GENERAL CLEARANCE GUIDELINES

APPLICATION	TOP RING END GAP FACTOR	PISTON/WALL 4.000-4.100	PISTON/WALL 4.100 & UP
Street Naturally Aspirated	0.0040	.0025-.0035	.0035-.0045
Street Towing	0.0045	.0030-.0040	.0040-.0050
Street Nitrous Or Supercharged	0.0050	.0035-.0045	.0045-.0055
Circle Track 2 Bbl Or Restrictor	0.0040	.0030-.0040	.0045-.0055
Circle Track Unrestricted	0.0040	.0035-.0055	.0045-.0065
Circle Track Alcohol Injection	0.0040	.0035-.0055	.0045-.0065
Circle Track Alcohol Carb	0.0045	.0040-.0060	.0050-.0070
Drag Gasoline	0.0040	.0040-.0060	.0050-.0070
Drag Alcohol	0.0040	.0030-.0060	.0040-.0070
Drag Supercharged Or Nitrous	0.0050	.0050-.0080	.0060-.0090
Drag Supercharged Alcohol	0.0050	.0040-.0060	.0050-.0070
Marine Naturally Aspirated	0.0040	.0035-.0050	.0045-.0060
Marine Supercharged	0.0045	.0045-.0060	.0055-.0070
Propane	0.0040	.0030-.0060	.0040-.0070

# GM LS 4.8L / 5.3L / 5.7L / 6.0L-6.2L



New applications in the FHR line for LS based engines.  
Excellent choice for Street, Marine and Mild Boost / Nitrous.



**FEATURES:** Offset Wrist pins  
2nd Land Accumulator Grooves  
Round Wire Locks  
M42 Skirt Coating Standard

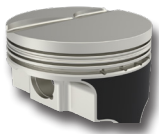
**ALLOY:** 4032  
**LOCK RINGS:** BR8894-1  
**RING PACK:** 1.5mm, 1.5mm, 3.0mm

## GM 4.7L / 5.3L BLOCK

FLAT TOP 2V

15° VALVE ANGLE

Piston Set	Piston and Ring Set	CI	Bore	Stroke	Rod	C.H.	Pin Dia.	CC	Gram Wgt. Piston/Pin	Top Land	C/R 5.3L		UEM Ring #
											64.5cc	68.4cc	
IC9985C.STD	IC9985CKTS.STD	325	3.780	3.622	6.098	1.331	.945	2.9cc	432 / 124	.275	9.8	9.1	3780CS8.STD
IC9985C.005	IC9985CKTS.005	326	3.785	3.622	6.098	1.331	.945	2.9cc	432 / 124	.275	9.8	9.1	3780CS8.005
IC9985C.010	IC9985CKTS.010	327	3.790	3.622	6.098	1.331	.945	2.9cc	432 / 124	.275	9.8	9.1	3780CS8.010
IC9985C.020	IC9985CKTS.020	329	3.800	3.622	6.098	1.331	.945	2.9cc	432 / 124	.275	9.8	9.1	3780CS8.020
IC9985C.030	IC9985CKTS.030	330	3.810	3.622	6.098	1.331	.945	2.9cc	432 / 124	.275	9.8	9.1	3780CS8.030
IC9985C.040	IC9985CKTS.040	332	3.820	3.622	6.098	1.331	.945	2.9cc	432 / 124	.275	9.8	9.1	3780CS8.040
IC9986C.STD	IC9986CKTS.STD	325	3.780	3.622	6.125	1.304	.927	2.9cc	427 / 121	.275	9.8	9.1	3780CS8.STD
IC9986C.005	IC9986CKTS.005	326	3.785	3.622	6.125	1.304	.927	2.9cc	427 / 121	.275	9.8	9.1	3780CS8.005
IC9986C.010	IC9986CKTS.010	327	3.790	3.622	6.125	1.304	.927	2.9cc	427 / 121	.275	9.8	9.1	3780CS8.010
IC9986C.020	IC9986CKTS.020	329	3.800	3.622	6.125	1.304	.927	2.9cc	427 / 121	.275	9.8	9.1	3780CS8.020
IC9986C.030	IC9986CKTS.030	330	3.810	3.622	6.125	1.304	.927	2.9cc	427 / 121	.275	9.8	9.1	3780CS8.030
IC9986C.040	IC9986CKTS.040	332	3.820	3.622	6.125	1.304	.927	2.9cc	427 / 121	.275	9.8	9.1	3780CS8.040
IC9987C.STD	IC9987CKTS.STD	359	3.780	4.000	6.125	1.115	.927	2.9cc	389 / 121	.265	10.7	10.1	3780CS8.STD
IC9987C.005	IC9987CKTS.005	360	3.785	4.000	6.125	1.115	.927	2.9cc	389 / 121	.265	10.7	10.1	3780CS8.005
IC9987C.010	IC9987CKTS.010	361	3.790	4.000	6.125	1.115	.927	2.9cc	389 / 121	.265	10.7	10.1	3780CS8.010
IC9987C.020	IC9987CKTS.020	363	3.800	4.000	6.125	1.115	.927	2.9cc	389 / 121	.265	10.7	10.1	3780CS8.020
IC9987C.030	IC9987CKTS.030	365	3.810	4.000	6.125	1.115	.927	2.9cc	389 / 121	.265	10.7	10.1	3780CS8.030
IC9987C.040	IC9987CKTS.040	367	3.820	4.000	6.125	1.115	.927	2.9cc	389 / 121	.265	10.7	10.1	3780CS8.040



**FEATURES:** Offset Wrist pins  
2nd Land Accumulator Grooves  
Round Wire Locks  
M42 Skirt Coating Standard

**ALLOY:** 4032  
**LOCK RINGS:** BR8894-1  
**RING PACK:** 1.5mm, 1.5mm, 3.0mm

## GM 5.7L LS1 / LS6 BLOCK

FLAT TOP 2V

15° VALVE ANGLE

Piston Set	Piston and Ring Set	CI	Bore	Stroke	Rod	C.H.	Pin Dia.	CC	Gram Wgt. Piston/Pin	Top Land	C/R		UEM Ring #
											64.5cc	68.4cc	
IC9988C.STD	IC9988CKTS.STD	346	3.898	3.622	6.098	1.331	.945	3.2cc	499 / 124	.275	10.3	9.8	3898CM8.STD
IC9988C.005	IC9988CKTS.005	347	3.903	3.622	6.098	1.331	.945	3.2cc	499 / 124	.275	10.3	9.8	3898CM8.005
IC9988C.010	IC9988CKTS.010	348	3.908	3.622	6.098	1.331	.945	3.2cc	499 / 124	.275	10.3	9.8	3898CM8.010
IC9989C.STD	IC9989CKTS.STD	346	3.898	3.622	6.125	1.304	.927	3.2cc	441 / 121	.275	10.3	9.8	3898CM8.STD
IC9989C.005	IC9989CKTS.005	347	3.903	3.622	6.125	1.304	.927	3.2cc	441 / 121	.275	10.3	9.8	3898CM8.005
IC9989C.010	IC9989CKTS.010	348	3.908	3.622	6.125	1.304	.927	3.2cc	441 / 121	.275	10.3	9.8	3898CM8.010
IC9990C.STD	IC9990CKTS.STD	382	3.898	4.000	6.125	1.115	.927	3.2cc	403 / 121	.265	11.2	10.7	3898CM8.STD
IC9990C.005	IC9990CKTS.005	383	3.903	4.000	6.125	1.115	.927	3.2cc	403 / 121	.265	11.2	10.7	3898CM8.005
IC9990C.010	IC9990CKTS.010	384	3.908	4.000	6.125	1.115	.927	3.2cc	403 / 121	.265	11.2	10.7	3898CM8.010



Option Available

LS Continued on next page...

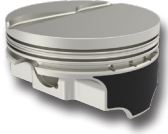


# GM LS 4.8L / 5.3L / 5.7L / 6.0L-6.2L, continued

New applications in the FHR line for LS based engines.  
Excellent choice for Street, Marine and Mild Boost / Nitrous.

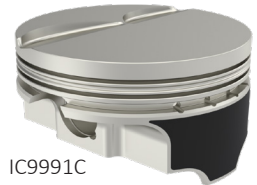
**FEATURES:** Offset Wrist pins  
2nd Land Accumulator Grooves  
Round Wire Locks  
M42 Skirt Coating Standard

**ALLOY:** 4032  
**LOCK RINGS:** BR8894-1  
**RING PACK:** 1.5mm, 1.5mm, 3.0mm



## GM 6.0L-6.2L LS2 / LS3 / LSA / LS9 / L99 BLOCK FLAT TOP 2V 15° VALVE ANGLE

Piston Set	Piston and Ring Set	CI	Bore	Stroke	Rod	C.H.	Pin Dia.	CC	Gram Wgt. Piston/Pin	Top Land	C/R		UEM Ring #
											64.5cc	68.4cc	
IC9991C.STD	IC9991CKTS.STD	402	4.000	4.000	6.125	1.115	.927	3.3cc	426 / 121	.265	11.7	11.2	4000CM8.STD
IC9991C.005	IC9991CKTS.005	403	4.005	4.000	6.125	1.115	.927	3.3cc	426 / 121	.265	11.7	11.2	4000CM8.005
IC9991C.010	IC9991CKTS.010	404	4.010	4.000	6.125	1.115	.927	3.3cc	426 / 121	.265	11.7	11.2	4000CM8.010
IC9991C.020	IC9991CKTS.020	406	4.020	4.000	6.125	1.115	.927	3.3cc	426 / 121	.265	11.7	11.2	4000CM8.020
IC9991C.030	IC9991CKTS.030	408	4.030	4.000	6.125	1.115	.927	3.3cc	426 / 121	.265	11.7	11.2	4000CM8.030
IC9991C.065	IC9991CKTS.065	415	4.065	4.000	6.125	1.115	.927	3.3cc	426 / 121	.265	11.7	11.2	4000CM8.065
IC9991C.070	IC9991CKTS.070	416	4.070	4.000	6.125	1.115	.927	3.3cc	426 / 121	.265	11.7	11.2	4000CM8.070
IC9991C.080	IC9991CKTS.080	418	4.080	4.000	6.125	1.115	.927	3.3cc	426 / 121	.265	11.7	11.2	4000CM8.080
IC9992C.STD	IC9992CKTS.STD	364	4.000	3.622	6.125	1.304	.927	3.3cc	461 / 121	.275	10.7	10.1	4000CM8.STD
IC9992C.005	IC9992CKTS.005	365	4.005	3.622	6.125	1.304	.927	3.3cc	461 / 121	.275	10.7	10.1	4000CM8.005
IC9992C.010	IC9992CKTS.010	366	4.010	3.622	6.125	1.304	.927	3.3cc	461 / 121	.275	10.7	10.1	4000CM8.010
IC9992C.020	IC9992CKTS.020	368	4.020	3.622	6.125	1.304	.927	3.3cc	461 / 121	.275	10.7	10.1	4000CM8.020
IC9992C.030	IC9992CKTS.030	370	4.030	3.622	6.125	1.304	.927	3.3cc	461 / 121	.275	10.7	10.1	4000CM8.030
IC9992C.065	IC9992CKTS.065	376	4.065	3.622	6.125	1.304	.927	3.3cc	461 / 121	.275	10.7	10.1	4000CM8.065
IC9992C.070	IC9992CKTS.070	377	4.070	3.622	6.125	1.304	.927	3.3cc	461 / 121	.275	10.7	10.1	4000CM8.070
IC9992C.080	IC9992CKTS.080	379	4.080	3.622	6.125	1.304	.927	3.3cc	461 / 121	.275	10.7	10.1	4000CM8.080



## CHEVROLET 350-V8

Dish-4V

**FOR BOOSTED APPLICATIONS**



Bore	Stroke	O.E. Deck Ht.	Alloy	Lock Ring
4.000	3.480	9.025"	4032	SRW-012 Round Wire See Notes

**OVERSIZES:** STD / .030 / .040 / .060 / .080

**RING PACK:** 2-1/16" / 1-3/16"

**RINGSET PART NO:** 4000BD8

**NOTES:** Offset Pin. No Mini Grooves on Top Land.  
Production runs after 12/16 supplied with spiral locks.

PART #	ROD	C/H	PIN	DISH/DOME	C/R			GRAM WEIGHT	TOP LAND
					58cc	64cc	76cc		
IC9979 / KTD	5.700	1.550	.927 x 2.750"	DISH / 4V 18.5cc	9.6	9.0	8.1	487/132	.250"
IC9980 / KTD	6.000	1.250	.927 x 2.750"	DISH / 4V 18.5cc	9.6	9.0	8.1	431/132	.220"

## CHEVROLET 350-V8

FLAT TOP-4V



Bore	Stroke	O.E. Deck Ht.	Alloy	Lock Ring
4.000	3.480	9.025"	4032	SRW-012 Round Wire See Notes

**OVERSIZES:** STD / .030 / .040 / .060 / .080

**RING PACK:** \*2-5/64" / 1-3/16" †2-1/16" / 1-3/16"

**RINGSET PART NO:** \*4000AM8, 4000AD8, †4000BD8

**NOTES:** Offset Pin. IC9964 replaces IC9928. Update includes 1/16th ring pack and round wire lockrings.  
Production runs after 12/16 supplied with spiral locks.

PART #	ROD	C/H	PIN	DISH/DOME	C/R			GRAM WEIGHT	TOP LAND
					58cc	64cc	76cc		
*IC9913 / KTM	5.700	1.550	.927 x 2.750"	FT/4V 6.4cc	10.5	9.8	8.7	533/132	.250"
†IC9964 / KTD	6.000	1.250	.927 x 2.750"	FT/4V 10cc	10.5	9.8	8.7	450/132	.220"

## CHEVROLET 350-V8

FLAT TOP-2V



Bore	Stroke	O.E. Deck Ht.	Alloy	Lock Ring
4.000	3.480	9.025"	4032	SRW-012 Round Wire See Notes

**OVERSIZES:** STD / .030 / .040 / .060

**RING PACK:** \*2-5/64" / 1-3/16" †2-1/16" / 1-3/16"

**RINGSET PART NO:** \*4000AM8, 4000AD8, †4000BD8

**NOTES:** Centered Pin. IC9962 replaces IC9930. Update includes 1/16th ring pack and round wire lockrings.  
Production runs after 12/16 supplied with spiral locks.

PART #	ROD	C/H	PIN	DISH/DOME	C/R			GRAM WEIGHT	TOP LAND
					58cc	64cc	76cc		
*IC9929 / KTM	5.700	1.550	.927 x 2.750"	FT/2V 5cc	11.2	10.4	9.1	545/132	.250"
†IC9962 / KTD	6.000	1.250	.927 x 2.750"	FT/2V 5cc	11.2	10.4	9.1	465/132	.220"

## CHEVROLET 350-V8

DOME-2V



Bore	Stroke	O.E. Deck Ht.	Alloy	Lock Ring
4.000	3.480	9.025"	4032	SRW-012 Round Wire See Notes

**OVERSIZES:** STD / .030 / .040 / .060

**RING PACK:** \*2-5/64" / 1-3/16" †2-1/16" / 1-3/16"

**RINGSET PART NO:** \*4000AM8, 4000AD8, †4000BD8

**NOTES:** Centered Pin. Will Fit Vortec and Brodix-10 Cylinder Heads. IC9967 replaces IC9934. Update includes 1/16th ring pack and round wire lockrings. Production runs after 12/16 supplied with spiral locks.

PART #	ROD	C/H	PIN	DISH/DOME	C/R			GRAM WEIGHT	TOP LAND
					58cc	64cc	76cc		
*IC9933 / KTM	5.700	1.550	.927 x 2.750"	.190 S/Dome -6cc	12.8	11.8	10.1	575/132	.250"
†IC9967 / KTD	6.000	1.250	.927 x 2.750"	.190 S/Dome -6cc	12.8	11.8	10.1	490/132	.220"

## CHEVROLET 377-V8 DISH-2V



Bore	Stroke	O.E. Deck Ht.	Alloy	Lock Ring
4.125	3.480	9.025"	4032	93 True-Arc See Notes

**OVERSIZES:** STD / .030 / .040 / .060

**RING PACK:** 2-5/64" / 1-3/16"

**RINGSET PART NO:** 4125AM8, 4125AD8

**NOTES:** Centered Pin.

Production runs after 12/16 supplied with spiral locks.

PART #	ROD	C/H	PIN	DISH/DOME	C/R			GRAM WEIGHT	TOP LAND
					58cc	64cc	76cc		
IC9943 / KTM	5.700	1.561	.927 x 2.750"	DISH/2V 20cc	9.9	9.3	8.4	543/132	.290"

## CHEVROLET 377-V8 FLAT TOP-2V



Bore	Stroke	O.E. Deck Ht.	Alloy	Lock Ring
4.125	3.480	9.025"	4032	93 True-Arc See Notes

**OVERSIZES:** STD / .030 / .040 / .060

**RING PACK:** 2-5/64" / 1-3/16"

**RINGSET PART NO:** 4125AM8, 4125AD8

**NOTES:** Centered Pin.

Production runs after 12/16 supplied with spiral locks.

PART #	ROD	C/H	PIN	DISH/DOME	C/R			GRAM WEIGHT	TOP LAND
					58cc	64cc	76cc		
IC9937 / KTM	5.700	1.561	.927 x 2.750"	FT/2V 3.7cc	12.0	11.1	9.7	589/132	.250"
IC9938 / KTM	6.000	1.261	.927 x 2.750"	FT/2V 3.7cc	12.0	11.1	9.7	518/132	.250"

## CHEVROLET 377-V8 DOME-2V



Bore	Stroke	O.E. Deck Ht.	Alloy	Lock Ring
4.125	3.480	9.025"	4032	93 True-Arc See Notes

**OVERSIZES:** STD / .030 / .040 / .060

**RING PACK:** 2-5/64" / 1-3/16"

**RINGSET PART NO:** 4125AM8, 4125AD8

**NOTES:** Centered Pin. Will Fit Vortec Cylinder Heads.

Production runs after 12/16 supplied with spiral locks.

PART #	ROD	C/H	PIN	DISH/DOME	C/R			GRAM WEIGHT	TOP LAND
					58cc	64cc	76cc		
IC9939 / KTM	5.700	1.561	.927 x 2.750"	.075 S/Dome -2.6cc	13.0	12.0	10.4	606/132	.250"
IC9940 / KTM	6.000	1.261	.927 x 2.750"	.075 S/Dome -2.6cc	13.0	12.0	10.4	541/132	.250"

## CHEVROLET 383-V8 DISH-4V



Bore	Stroke	O.E. Deck Ht.	Alloy	Lock Ring
4.000	3.750	9.025"	4032	SRW-012 Round Wire See Notes

**OVERSIZES:** STD / .030 / .040 / .060 / .080

**RING PACK:** \*2-5/64" / 1-3/16", †2-1/16" / 1-3/16"

**RINGSET PART NO:** \*4000AM8, 4000AD8, †4000BD8

**NOTES:** Offset Pin. IC9965 replaces IC9945.

Production runs after 12/16 supplied with spiral locks.

PART #	ROD	C/H	PIN	DISH/DOME	C/R			GRAM WEIGHT	TOP LAND
					58cc	64cc	76cc		
*IC9926 / KTM	5.700	1.425	.927 x 2.750"	DISH/4V 18cc	10.2	9.6	8.6	489/132	.250"
†IC9965 / KTD	6.000	1.125	.927 x 2.750"	DISH/4V 18cc	10.2	9.6	8.6	410/132	.220"



## CHEVROLET 383-V8 FLAT TOP-4V



Bore	Stroke	O.E. Deck Ht.	Alloy	Lock Ring
4.000	3.750	9.025"	4032	SRW-012 Round Wire See Notes

**OVERSIZES:** STD / .030 / .040 / .060 / .080

**NOTES:** Offset Pin. IC9961 replaced IC9927.

**RING PACK:** \*2-5/64" / 1-3/16" †2-1/16" / 1-3/16"

Production runs after 12/16 supplied with spiral locks.

**RINGSET PART NO:** \*4000AM8, 4000AD8, †4000BD8

PART #	ROD	C/H	PIN	DISH/DOME	C/R			GRAM WEIGHT	TOP LAND
					58cc	64cc	76cc		
*IC9914 / KTM	5.700	1.425	.927 x 2.750"	FT/4V 6.4cc	11.3	10.5	9.3	533/132	.250"
†IC9961 / KTD	6.000	1.125	.927 x 2.750"	FT/4V 10cc	11.3	10.5	9.3	432/132	.220"

## CHEVROLET 383-V8 FLAT TOP-2V



Bore	Stroke	O.E. Deck Ht.	Alloy	Lock Ring
4.000	3.750	9.025"	4032	SRW-012 Round Wire See Notes

**OVERSIZES:** STD / .030 / .040 / .060

**NOTES:** Centered Pin. IC9966 replaced IC9932.

**RING PACK:** \*2-5/64" / 1-3/16" †2-1/16" / 1-3/16"

Production runs after 12/16 supplied with spiral locks.

**RINGSET PART NO:** \*4000AM8, 4000AD8, †4000BD8

PART #	ROD	C/H	PIN	DISH/DOME	C/R			GRAM WEIGHT	TOP LAND
					58cc	64cc	76cc		
*IC9931 / KTM	5.700	1.425	.927 x 2.750"	FT/2V 5cc	12.0	11.1	9.8	536/132	.250"
†IC9966 / KTD	6.000	1.125	.927 x 2.750"	FT/2V 5cc	12.0	11.1	9.8	450/132	.220"

## CHEVROLET 383-V8 DOME-2V



Bore	Stroke	O.E. Deck Ht.	Alloy	Lock Ring
4.000	3.750	9.025"	4032	SRW-012 Round Wire See Notes

**OVERSIZES:** STD / .030 / .040 / .060

**NOTES:** Centered Pin. Will Fit Vortec and Brodix-10 Cylinder Heads. IC9963 replaced IC9936.

**RING PACK:** \*2-5/64" / 1-3/16" †2-1/16" / 1-3/16"

Production runs after 12/16 supplied with spiral locks.

**RINGSET PART NO:** \*4000AM8, 4000AD8, †4000BD8

PART #	ROD	C/H	PIN	DISH/DOME	C/R			GRAM WEIGHT	TOP LAND
					58cc	64cc	76cc		
*IC9935 / KTM	5.700	1.425	.927 x 2.750"	.062 S/Dome -1cc	12.8	11.8	10.3	550/132	.250"
†IC9963 / KTD	6.000	1.125	.927 x 2.750"	.088 S/Dome -1cc	12.8	11.8	10.3	460/132	.220"

## CHEVROLET 383-V8 DOME-2V



Bore	Stroke	O.E. Deck Ht.	Alloy	Lock Ring
4.000	3.750	9.025"	4032	*93 True Arc See Notes

**OVERSIZES:** STD / .030 / .040 / .060

**NOTES:** Centered Pin.

**RING PACK:** 2-5/64" / 1-3/16"

Production runs after 12/16 supplied with spiral locks.

**RINGSET PART NO:** 4000AM8, 4000AD8

PART #	ROD	C/H	PIN	DISH/DOME	C/R			GRAM WEIGHT	TOP LAND
					58cc	64cc	76cc		
IC9916 / KTM	5.700	1.433	.927 x 2.750"	.400 H/Dome -15.2cc	16.3	14.7	12.3	559/132	.250"



# CHEVROLET SBC FHR, *continued*

## CHEVROLET 383-V8 DISH-4V GM Crate ZZ383 & HT383E



Bore	Stroke	O.E. Deck Ht.	Alloy	Lock Ring
4.005	3.800	9.025"	4032	*93 True Arc See Notes

**OVERSIZES:** STD / .030 / .040 / .060 / .080  
**RING PACK:** 2-5/64" / 1-3/16"  
**RINGSET PART NO:** 4000AM8, 4000AD8

**NOTES:** Offset Pin.  
 GM Crate 383 using block #88962516  
 Production runs after 12/16 supplied with spiral locks.

PART #	ROD	C/H	PIN	DISH/DOME	C/R			GRAM WEIGHT	TOP LAND
					58cc	64cc	76cc		
IC9954 / KTM	5.700	1.408	.927 x 2.750"	DISH/4V 18cc	10.4	9.8	8.8	485/132	.250"

## CHEVROLET 383-V8 FLAT TOP-4V GM Crate ZZ383 & HT383E



Bore	Stroke	O.E. Deck Ht.	Alloy	Lock Ring
4.005	3.800	9.025"	4032	*93 True Arc See Notes

**OVERSIZES:** STD / .030 / .040 / .060 / .080  
**RING PACK:** 2-5/64" / 1-3/16"  
**RINGSET PART NO:** 4000AM8, 4000AD8

**NOTES:** Offset Pin.  
 GM Crate 383 using block #88962516  
 Production runs after 12/16 supplied with spiral locks.

PART #	ROD	C/H	PIN	DISH/DOME	C/R			GRAM WEIGHT	TOP LAND
					58cc	64cc	76cc		
IC9955 / KTM	5.700	1.408	.927 x 2.750"	FT/4V 6.4cc	11.9	11.1	9.8	533/132	.250"

## CHEVROLET 400-V8 DISH-2V



Bore	Stroke	O.E. Deck Ht.	Alloy	Lock Ring
4.125	3.750	9.025"	4032	SRW-012 Round Wire See Notes

**OVERSIZES:** .030 / .040 / .060  
**RING PACK:** 2-5/64" / 1-3/16"  
**RINGSET PART NO:** 4125AM8, 4125AD8

**NOTES:** Centered Pin. IC9969 replaces IC9944.  
 Production runs after 12/16 supplied with spiral locks.

PART #	ROD	C/H	PIN	DISH/DOME	C/R			GRAM WEIGHT	TOP LAND
					58cc	64cc	76cc		
IC9969 / KTM	5.700	1.425	.927 x 2.750"	CIR. DISH/4V 23cc	10.2	9.6	8.6	530/132	.250"

## CHEVROLET 400-V8 FLAT TOP-2V



Bore	Stroke	O.E. Deck Ht.	Alloy	Lock Ring
4.125	3.750	9.025"	4032	SRW-012 Round Wire See Notes

**OVERSIZES:** .030 / .040 / .060  
**RING PACK:** \*2-5/64" / 1-3/16" †2-1/16" / 1-3/16"  
**RINGSET PART NO:** \*4125AM8, 4125AD8, †4125BD8

**NOTES:** Centered Pin. IC9968 replaces IC9942. Update includes 1/16th ring pack and round wire lockrings.  
 Production runs after 12/16 supplied with spiral locks.

PART #	ROD	C/H	PIN	DISH/DOME	C/R			GRAM WEIGHT	TOP LAND
					58cc	64cc	76cc		
*IC9941 / KTM	5.700	1.425	.927 x 2.750"	FT/2V 5cc	12.6	11.7	10.3	571/132	.250"
†IC9968 / KTD	6.000	1.125	.927 x 2.750"	FT/2V 5cc	12.6	11.7	10.3	488/132	.230"



Option Available

## CHEVROLET 396 / 402-V8 DOME-1V



Bore	Stroke	O.E. Deck Ht.	Alloy	Lock Ring
4.125	3.760	9.800"	4032	LR984A Round Wire See Notes

**OVERSIZES:** STD / .010 / .020 / .030 / .040 / .060  
**RING PACK:** 2-5/64" / 1-3/16"  
**RINGSET PART NO:** 4125AM8, 4125AD8

**NOTES:** Centered Pin. Closed Chamber Design. Part Number 9948 @ Std Will Fit A .030" Over 396ci. Production runs after 12/16 supplied with spiral locks.

PART #	ROD	C/H	PIN	DISH/DOME	C/R			GRAM WEIGHT	TOP LAND
					96.5cc	105cc	119cc		
IC9948 / KTM	6.135	1.765	.990 x 2.750"	.204" S/Dome -17cc	10.5	9.6	8.5	674/141	.340"

## CHEVROLET 396 / 402-V8 DOME-1V



Bore	Stroke	O.E. Deck Ht.	Alloy	Lock Ring
4.125	3.760	9.800"	4032	LR984A Round Wire See Notes

**OVERSIZES:** STD / .030 / .040 / .060  
**RING PACK:** 2-5/64" / 1-3/16"  
**RINGSET PART NO:** 4125AM8, 4125AD8

**NOTES:** Centered Pin. Open Chamber Design. Part Number 9949 @ Std Will Fit A .030" Over 396ci. Production runs after 12/16 supplied with spiral locks.

PART #	ROD	C/H	PIN	DISH/DOME	C/R			GRAM WEIGHT	TOP LAND
					96.5cc	105cc	119cc		
IC9949 / KTM	6.135	1.765	.990 x 2.750"	.580" S/Dome -41cc	10.6			743/141	.340"

## CHEVROLET 434 - V8 DOME-1V

### 396 STROKER APPLICATION



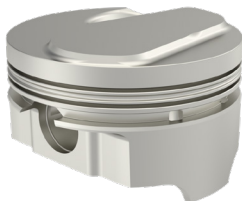
Bore	Stroke	O.E. Deck Ht.	Alloy	Lock Ring
4.125	4.000	9.800"	4032	LR984A Round Wire See Notes

**OVERSIZES:** STD / .010 / .020 / .030 / .040 / .060  
**RING PACK:** 2-1/16" / 1-3/16"  
**RINGSET PART NO:** 4125BD8

**NOTES:** Use 396 Block with 454 Crank. Centered Pin. No Mini Grooves on Top Land. Production runs after 12/16 supplied with spiral locks.

PART #	ROD	C/H	PIN	DISH/DOME	C/R			GRAM WEIGHT	TOP LAND
					96.5cc	105cc	119cc		
IC9981 / KTD	6.135	1.645	.990 x 2.750"	.204" S/Dome -17cc	10.9	10.0	8.9	605/141	.310"

## CHEVROLET 461-V8 DOME-1V



Bore	Stroke	O.E. Deck Ht.	Alloy	Lock Ring
4.125	4.250	9.800"	4032	PRH107-3 See Notes

**OVERSIZES:** STD / .020 / .030 / .040 / .060  
**RING PACK:** 2-1/16" / 1-3/16"  
**RINGSET PART NO:** 125BD8

**NOTES:** Centered Pin. 427/454 block with 4.250" stroke. No mini grooves on top land. Fits both OPEN and CLOSED chamber heads.

PART #	ROD	C/H	PIN	DISH/DOME	C/R			GRAM WEIGHT	TOP LAND
					96.5cc	105cc	119cc		
IC9982	6.385	1.270	.990 x 2.750"	.140" S/Dome -12cc	11.0	10.2	9.1	552/141	.340"



# CHEVROLET BBC FHR, *continued*

## CHEVROLET 427-V8 DOME-1V



Bore	Stroke	O.E. Deck Ht.	Alloy	Lock Ring
4.250	3.760	9.800"	4032	LR984A Round Wire See Notes

**OVERSIZES:** STD / .030 / .040 / .060 / .070 / .100  
**RING PACK:** 2-5/64" / 1-3/16"  
**RINGSET PART NO:** 4250AM8, 4250AD8

**NOTES:** Centered Pin.  
 Closed Chamber Design.  
 Production runs after 12/16 supplied with spiral locks.

PART #	ROD	C/H	PIN	DISH/DOME	C/R			GRAM WEIGHT	TOP LAND
					96.5cc	105cc	119cc		
IC9950 / KTM	6.135	1.765	.990 x 2.750"	.124" S/Dome -10.2cc	10.3	9.5	8.5	655/141	.340"

## CHEVROLET 427-V8 DOME-1V



Bore	Stroke	O.E. Deck Ht.	Alloy	Lock Ring
4.250	3.760	9.800"	4032	LR984A Round Wire See Notes

**OVERSIZES:** STD / .030 / .040 / .060 / .070 / .100  
**RING PACK:** 2-5/64" / 1-3/16"  
**RINGSET PART NO:** 4250AM8, 4250AD8

**NOTES:** Centered Pin.  
 Closed Chamber Design.  
 Production runs after 12/16 supplied with spiral locks.  
 Fits Edelbrock 110cc head.

PART #	ROD	C/H	PIN	DISH/DOME	C/R			GRAM WEIGHT	TOP LAND
					96.5cc	105cc	119cc		
IC9958 / KTM	6.135	1.765	.990 x 2.750"	.450" S/Dome -28.2cc	12.4	11.3	9.8	706/141	.340"

## CHEVROLET 427-V8 DOME-1V



Bore	Stroke	O.E. Deck Ht.	Alloy	Lock Ring
4.250	3.760	9.800"	4032	LR984A Round Wire See Notes

**OVERSIZES:** STD / .030 / .040 / .060 / .070 / .100  
**RING PACK:** 2-5/64" / 1-3/16"  
**RINGSET PART NO:** 4250AM8, 4250AD8

**NOTES:** Centered Pin. Open Chamber Design.  
 Production runs after 12/16 supplied with spiral locks.

PART #	ROD	C/H	PIN	DISH/DOME	C/R			GRAM WEIGHT	TOP LAND
					119cc				
IC9917 / KTM	6.135	1.765	.990 x 2.750"	.500" S/Dome -41cc	11.1			751/141	.325"

## CHEVROLET 454-V8 FLAT TOP-1V



Bore	Stroke	O.E. Deck Ht.	Alloy	Lock Ring
4.250	4.000	9.800"	4032	LR984A Round Wire See Notes

**OVERSIZES:** STD / .030 / .040 / .060 / .070 / .100  
**RING PACK:** 2-5/64" / 1-3/16"  
**RINGSET PART NO:** 4250AM8, 4250AD8

**NOTES:** Centered Pin.  
 Production runs after 12/16 supplied with spiral locks.

PART #	ROD	C/H	PIN	DISH/DOME	C/R			GRAM WEIGHT	TOP LAND
					96.5cc	105cc	119cc		
IC9920 / KTM	6.135	1.645	.990 x 2.750"	FT/1V 3cc	9.7	9.0	8.2	596/141	.325"



Option Available

## CHEVROLET 454-V8 DOME-1V



Bore	Stroke	O.E. Deck Ht.	Alloy	Lock Ring
4.250	4.000	9.800"	4032	LR984A Round Wire See Notes

**OVERSIZES:** STD / .030 / .040 / .060 / .070 / .100  
**RING PACK:** 2-5/64" / 1-3/16"  
**RINGSET PART NO:** 4250AM8, 4250AD8

**NOTES:** Centered Pin. Closed Chamber Design.  
 Production runs after 12/16 supplied with spiral locks.

PART #	ROD	C/H	PIN	DISH/DOME	C/R			GRAM WEIGHT	TOP LAND
					96.5cc	105cc	119cc		
IC9919 / KTM	6.135	1.645	.990 x 2.750"	.200" S/Dome -18.3cc	11.8	10.8	9.6	657/141	.325"

## CHEVROLET 454-V8 DOME-1V



Bore	Stroke	O.E. Deck Ht.	Alloy	Lock Ring
4.250	4.000	9.800"	4032	LR984A Round Wire See Notes

**OVERSIZES:** STD / .030 / .040 / .060 / .070 / .100  
**RING PACK:** 2-5/64" / 1-3/16"  
**RINGSET PART NO:** 4250AM8, 4250AD8

**NOTES:** Centered Pin. Open Chamber Design.  
 Production runs after 12/16 supplied with spiral locks.

PART #	ROD	C/H	PIN	DISH/DOME	C/R			GRAM WEIGHT	TOP LAND
					119cc				
IC9918 / KTM	6.135	1.645	.990 x 2.750"	.500" S/Dome -44.7cc	12.3			723/141	.325"

## CHEVROLET 489-V8 FLAT TOP-1V



Bore	Stroke	O.E. Deck Ht.	Alloy	Lock Ring
4.250	4.250	9.800"	4032	LR984A Round Wire See Notes

**OVERSIZES:** STD / .030 / .040 / .060 / .070 / .100  
**RING PACK:** 2-5/64" / 1-3/16"  
**RINGSET PART NO:** 4250AM8, 4250AD8

**NOTES:** Centered Pin.  
 Production runs after 12/16 supplied with spiral locks.

PART #	ROD	C/H	PIN	DISH/DOME	C/R			GRAM WEIGHT	TOP LAND
					96.5cc	105cc	119cc		
IC9951 / KTM	6.385	1.270	.990 x 2.750"	FT/1V 3cc	10.2	9.5	8.6	527/141	.320"

## CHEVROLET 489-V8 DOME-1V



Bore	Stroke	O.E. Deck Ht.	Alloy	Lock Ring
4.250	4.250	9.800"	4032	LR984A Round Wire See Notes

**OVERSIZES:** STD / .030 / .040 / .060 / .070 / .100  
**RING PACK:** 2-1/16" / 1-3/16"\* , 2-5/64" / 1-3/16"  
**RINGSET PART NO:** 4250BD8\* , 4250AM8, 4250AD8

**NOTES:** \*Use 427/454 Block with 4.250" stroke. No Mini Grooves on Top Land. \*Fits both OPEN and CLOSED chamber heads. Open Chamber Design. Production runs after 12/16 supplied with spiral locks. Centered Pin.

PART #	ROD	C/H	PIN	DISH/DOME	C/R			GRAM WEIGHT	TOP LAND
					96.5cc	105cc	119cc		
IC9983 / KTM*	6.385	1.270	.990 x 2.750"	.175" cc Dome -15cc	12.0	11.1	9.8	568/141	.325"
IC9952 / KTM	6.385	1.270	.990 x 2.750"	.218" S/Dome -23cc		10.5		597/141	.320"

CHEVROLET BBC FHR CONTINUED



# CHEVROLET BBC FHR, *continued*

## CHEVROLET 502-V8 FLAT TOP-1V



Bore	Stroke	O.E. Deck Ht.	Alloy	Lock Ring
4.466	4.000	9.800"	4032	PRG110-3 See Notes

**OVERSIZES:** .004 / .034 / .064  
**RING PACK:** 2-5/64" / 1-3/16"  
**RINGSET PART NO:** 4466BD8

**NOTES:** Centered Pin. No Mini Grooves on Top Land. Fits both OPEN and CLOSED chamber heads.

PART #	ROD	C/H	PIN	DISH/DOME	C/R			GRAM WEIGHT	TOP LAND
					96.5cc	105cc	119cc		
IC9984	6.135	1.645	.990 x 2.750"	.122" S/Dome -10cc	11.6	10.7	9.5	736/141	.325"

## CHEVROLET 540-V8 DOME-1V



Bore	Stroke	O.E. Deck Ht.	Alloy	Lock Ring
4.500	4.250	9.800"	4032	LR984A Round Wire See Notes

**OVERSIZES:** .004 / .030 / .040 / .060 / .100  
**RING PACK:** 2-1/16" / 1-3/16"  
**RINGSET PART NO:** 4500BD8

**NOTES:** Centered Pin. Closed Chamber Design. Production runs after 12/16 supplied with spiral locks.

PART #	ROD	C/H	PIN	DISH/DOME	C/R			GRAM WEIGHT	TOP LAND
					119cc				
IC9957 / KTD	6.385	1.270	.990 x 2.750"	.121" S/Dome -10cc	10.0			639/141	.325"



## CHRYSLER 340 - V8 FLAT TOP - 2V



Bore	Stroke	O.E. Deck Ht.	Alloy	Lock Ring
4.040	3.310	9.599"	4032	LR984A Round Wire See Notes

**OVERSIZES:** STD .020 / .030 / .040  
**RING PACK:** 2-1/16" / 1-3/16"  
**RINGSET PART NO:** 4000BD8

**NOTES:** Centered Pin. No Mini Grooves on Top Land  
 Production runs after 12/16 supplied with spiral locks.

PART #	ROD	C/H	PIN	DISH/DOME	C/R			GRAM WEIGHT	TOP LAND
					58cc	65cc	68cc		
IC9975 / KTD	6.123	1.812	0.984 X 2.750"	FT/2V 7cc	10.6	9.8	9.4	606/118	.250"

## CHRYSLER 360 - V8 FLAT TOP - 2V



Bore	Stroke	O.E. Deck Ht.	Alloy	Lock Ring
4.000	3.580	9.599"	4032	LR984A Round Wire See Notes

**OVERSIZES:** STD .020 / .030 / .040 / .060  
**RING PACK:** 2-1/16" / 1-3/16"  
**RINGSET PART NO:** 4000BD8

**NOTES:** Centered Pin. No Mini Grooves on Top Land  
 Production runs after 12/16 supplied with spiral locks.

PART #	ROD	C/H	PIN	DISH/DOME	C/R			GRAM WEIGHT	TOP LAND
					58cc	65cc	68cc		
IC9976 / KTD	6.123	1.675	0.984 X 2.750"	FT/2V 7cc	11.2	10.3	10.0	565/118	.250"

## CHRYSLER 408 - V8 DISH-2V



Bore	Stroke	O.E. Deck Ht.	Alloy	Lock Ring
4.000	4.000	9.599"	4032	LR984A Round Wire See Notes

**OVERSIZES:** STD .020 / .030 / .040 / .060 / .070 / .080  
**RING PACK:** 2-1/16" / 1-3/16"  
**RINGSET PART NO:** 4000BD8

**NOTES:** Centered Pin. No Mini Grooves on Top Land  
 Production runs after 12/16 supplied with spiral locks.

PART #	ROD	C/H	PIN	DISH/DOME	C/R			GRAM WEIGHT	TOP LAND
					58cc	65cc	68cc		
IC9977 / KTD	6.123	1.450	0.984 X 2.750"	DISH/ 2V 23cc	10.3	9.7	9.4	506/118	.300"

## CHRYSLER 408 - V8 DISH - 2V



Bore	Stroke	O.E. Deck Ht.	Alloy	Lock Ring
4.000	4.000	9.599"	4032	LR984A Round Wire See Notes

**OVERSIZES:** STD .020 / .030 / .040 / .060 / .070 / .080  
**RING PACK:** 2-1/16" / 1-3/16"  
**RINGSET PART NO:** 4000BD8

**NOTES:** Centered Pin. No Mini Grooves on Top Land  
 Production runs after 12/16 supplied with spiral locks.

PART #	ROD	C/H	PIN	DISH/DOME	C/R			GRAM WEIGHT	TOP LAND
					58cc	65cc	68cc		
IC9978 / KTD	6.123	1.450	0.984 X 2.750"	DISH/ 2V 13cc	11.5	10.7	10.4	527/118	.300"



Option Available



# CHRYSLER BB FHR

## CHRYSLER 440-V8 FLAT TOP-2V



Bore	Stroke	O.E. Deck Ht.	Alloy	Lock Ring
4.320	3.750	10.725"	4032	SRW-010 Round Wire See Notes

**OVERSIZES:** STD / .030 / .040 / .060

**RING PACK:** 2-5/64" / 1-3/16"

**RINGSET PART NO:** 4320AM8

**NOTES:** Centered Pin. Piston IC9947 Will Be .090" Below Deck.  
Production runs after 12/16 supplied with spiral locks.

PART #	ROD	C/H	PIN	DISH/DOME	C/R			GRAM WEIGHT	TOP LAND
					72cc	80cc	90cc		
IC9947 / KTM	6.768	1.991	1.094 x 3.000"	FT/2V 5.6cc	9.4	8.8	8.2	686/190	.270"
IC9953 / KTM	6.768	2.067	1.094 x 3.000"	FT/2V 5.6cc	11.5	10.6	9.7	692/190	.270"

# FORD SB WINDSOR FHR

## FORD 289-302-V8 DISH-4V



Bore	Stroke	O.E. Deck Ht.	Alloy	Lock Ring
4.000	*2.780 / †3.000	8.206"	4032	SRW-012 Round Wire See Notes

**OVERSIZES:** STD / .030 / .040 / .060

**RING PACK:** 2-1/16" / 1-3/16"

**RINGSET PART NO:** 4000BD8

**NOTES:** Offset Pin. Update includes 1/16th ring pack and round wire lockrings.  
Production runs after 12/16 supplied with spiral locks.  
**\*289 †302**

PART #	ROD	C/H	PIN	DISH/DOME	C/R			GRAM WEIGHT	TOP LAND
					54cc	58cc	64cc		
IC9973 / KTD	*5.155 †5.090	1.608	.912 x 2.750"	DISH/4V 19cc	*8.0 †8.6	7.7 8.2	7.3 7.8	501/131	.285"

## FORD 289-302-V8 FLAT TOP-4V



Bore	Stroke	O.E. Deck Ht.	Alloy	Lock Ring
4.000	*2.780 / †3.000	8.206"	4032	SRW-012 Round Wire See Notes

**OVERSIZES:** STD / .030 / .040 / .060

**RING PACK:** 2-1/16" / 1-3/16"

**RINGSET PART NO:** 4000BD8

**NOTES:** Offset Pin. IC9972 replaces IC9924. Update includes 1/16th ring pack and round wire lockrings.  
Production runs after 12/16 supplied with spiral locks.  
**\*289 †302**

PART #	ROD	C/H	PIN	DISH/DOME	C/R			GRAM WEIGHT	TOP LAND
					54cc	58cc	64cc		
IC9972 / KTD	*5.155 †5.090	1.608	.912 x 2.750"	FT/4V 11cc	*8.8 †9.4	8.4 9.0	7.9 8.4	528/131	.250"

## FORD 331-V8 FLAT TOP-4V



Bore	Stroke	O.E. Deck Ht.	Alloy	Lock Ring
4.000	3.250	8.206"	4032	SRW-012 Round Wire See Notes

**OVERSIZES:** STD / .030 / .040 / .060

**RING PACK:** 2-1/16" / 1-3/16"

**RINGSET PART NO:** 4000BD8

**NOTES:** Offset Pin. Uses .9272" Diameter (SBC) Wrist Pin. 302W Block. IC9970 replaces IC9921. Update includes 1/16th ring pack and round wire lockrings.  
Production runs after 12/16 supplied with spiral locks.

PART #	ROD	C/H	PIN	DISH/DOME	C/R			GRAM WEIGHT	TOP LAND
					54cc	58cc	64cc		
IC9970 / KTD	5.400	1.170	.927 x 2.750"	FT/4V 11cc	10.1	9.6	9.0	443/132	.250"



Option Available



## FORD 347-V8 FLAT TOP-4V



Bore	Stroke	O.E. Deck Ht.	Alloy	Lock Ring
4.000	3.400	8.206"	4032	SRW-012 Round Wire See Notes

**OVERSIZES:** STD / .030 / .040 / .060  
**RING PACK:** 2-1/16" / 1-3/16"  
**RINGSET PART NO:** 4000BD8

**NOTES:** Offset Pin. Uses .9272" Diameter (SBC) Wrist Pin. 302W Block. IC9971 replaces IC9922. Update includes 1/16th ring pack and round wire lockrings. Production runs after 12/16 supplied with spiral locks.

PART #	ROD	C/H	PIN	DISH/DOME	C/R			GRAM WEIGHT	TOP LAND
					54cc	58cc	64cc		
IC9971 / KTD	5.400	1.090	.927 x 2.750"	FT/4V 11cc	10.5	10.0	9.4	434/132	.250"

## FORD 351-V8 FLAT TOP-4V



Bore	Stroke	O.E. Deck Ht.	Alloy	Lock Ring
4.000	3.500	9.500"	4032	SRW-012 Round Wire See Notes

**OVERSIZES:** STD / .030 / .040 / .060  
**RING PACK:** 2-5/64" / 1-3/16"  
**RINGSET PART NO:** 4000AM8, 4000AD8

**NOTES:** Offset Pin. 351W Block. Production runs after 12/16 supplied with spiral locks.

PART #	ROD	C/H	PIN	DISH/DOME	C/R			GRAM WEIGHT	TOP LAND
					54cc	58cc	64cc		
IC9925 / KTM	5.956	1.774	.912 x 2.750"	FT/4V 11cc	11.0	10.5	9.8	544/131	.247"

## FORD 393-V8 DISH-4V



Bore	Stroke	O.E. Deck Ht.	Alloy	Lock Ring
4.000	3.850	9.500"	4032	SRW-012 Round Wire See Notes

**OVERSIZES:** STD / .030 / .040 / .060  
**RING PACK:** 2-1/16" / 1-3/16"  
**RINGSET PART NO:** 4000BD8

**NOTES:** Offset Pin. 351W Block. Update includes 1/16th ring pack and round wire lockrings. Production runs after 12/16 supplied with spiral locks.

PART #	ROD	C/H	PIN	DISH/DOME	C/R			GRAM WEIGHT	TOP LAND
					54cc	58cc	64cc		
IC9973 / KTD	5.956	1.608	.912 x 2.750"	DISH/4V 19cc	10.7	10.3	9.7	501/131	.285"

## FORD 393-V8 FLAT TOP-4V



Bore	Stroke	O.E. Deck Ht.	Alloy	Lock Ring
4.000	3.850	9.500"	4032	SRW-012 Round Wire See Notes

**OVERSIZES:** STD / .030 / .040 / .060  
**RING PACK:** 2-1/16" / 1-3/16"  
**RINGSET PART NO:** 4000BD8

**NOTES:** Offset Pin. 351W Block. IC9972 replaces IC9924. Update includes 1/16th ring pack and round wire lockrings. Production runs after 12/16 supplied with spiral locks.

PART #	ROD	C/H	PIN	DISH/DOME	C/R			GRAM WEIGHT	TOP LAND
					54cc	58cc	64cc		
IC9972 / KTD	5.956	1.608	.912 x 2.750"	FT/4V 11cc	11.8	11.2	10.5	528/131	.250"



Option Available



# FORD SB WINDSOR FHR, *continued*

## FORD 408-V8 DISH-4V / FLAT TOP-4V



Bore	Stroke	O.E. Deck Ht.	Alloy	Lock Ring
4.000	4.000	9.500"	4032	SRW-012 Round Wire See Notes

**OVERSIZES:** STD / .030 / .040 / .060  
**RING PACK:** \*2-5/64" / 1-3/16" †2-1/16" / 1-3/16"  
**RINGSET PART NO:** 4000AM8, 4000AD8, †4000BD8

**NOTES:** Offset Pin. Uses .9272" Diameter (SBC) Wrist Pin.  
 351W Block.  
 Production runs after 12/16 supplied with spiral locks.

PART #	ROD	C/H	PIN	DISH/DOME	C/R			GRAM WEIGHT	TOP LAND
					54cc	58cc	64cc		
†IC9974 / KTD	6.200	1.280	.927 x 2.750"	DISH/4V 24cc	10.6	10.1	9.6	452/132	.285"
*IC9923 / KTM	6.200	1.280	.927 x 2.750"	FT/4V 11cc	12.2	11.6	10.9	446/132	.235"

## PONTIAC FHR

### PONTIAC 400-V8 FLAT TOP-4V



Bore	Stroke	O.E. Deck Ht.	Alloy	Lock Ring
4.120	3.750	10.250"	4032	98 True-Arc See Notes

**OVERSIZES:** STD / .030 / .040 / .060  
**RING PACK:** 2-5/64" / 1-3/16"  
**RINGSET PART NO:** 4120AM8

**NOTES:** Offset Pin. Will work with 14° & 20° heads.  
 Production runs after 12/16 supplied with spiral locks.

PART #	ROD	C/H	PIN	DISH/DOME	C/R			GRAM WEIGHT	TOP LAND
					72cc	87cc	96cc		
IC9946 / KTM	6.630	1.714	.980 x 2.750"	FT/4V 10.8cc	10.1	8.8	8.2	563/149	.270"

### PONTIAC 455-V8 FLAT TOP-4V

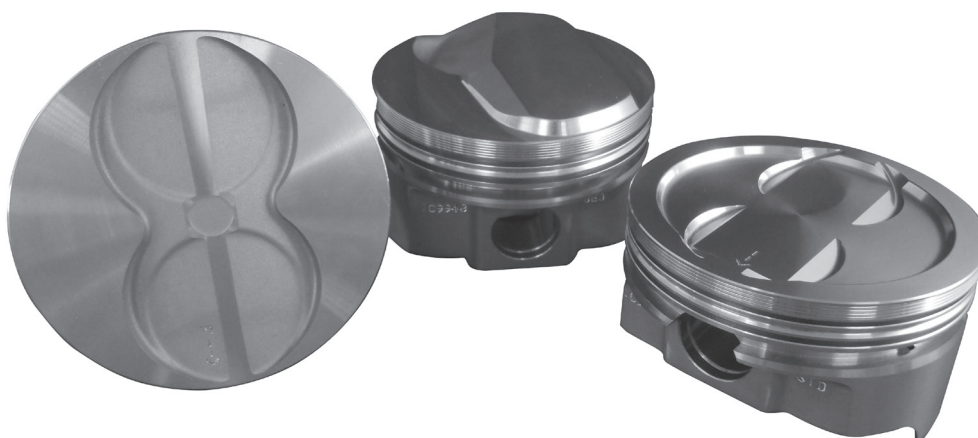


Bore	Stroke	O.E. Deck Ht.	Alloy	Lock Ring
4.151	4.210	10.250"	4032	98 True-Arc See Notes

**OVERSIZES:** STD / .030 / .040 / .060  
**RING PACK:** 1-5/64" / 1-1/16" / 1-3/16"  
**RINGSET PART NO:** 4151FM8

**NOTES:** Offset Pin. Will work with 14° & 20° heads.  
 Production runs after 12/16 supplied with spiral locks.

PART #	ROD	C/H	PIN	DISH/DOME	C/R			GRAM WEIGHT	TOP LAND
					72cc	87cc	96cc		
IC9960 / KTM	6.630	1.490	.980 x 2.750"	FT/4V 10.8cc	11.3	9.9	9.2	506/149	.270"



Option Available